



Distributed by:  
**DURAFLEX GROUP AUSTRALIA**

LEVEL 2, 6 McCABE PLACE  
CHATSWOOD NSW 2067  
AUSTRALIA

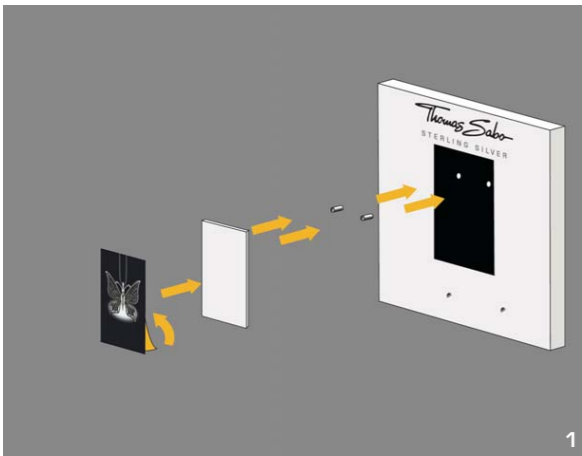
PHONE (02) 9417 6286  
FAX (02) 9417 5894

[sales@duraflexgroup.com.au](mailto:sales@duraflexgroup.com.au)  
[www.thomassabo.com](http://www.thomassabo.com)

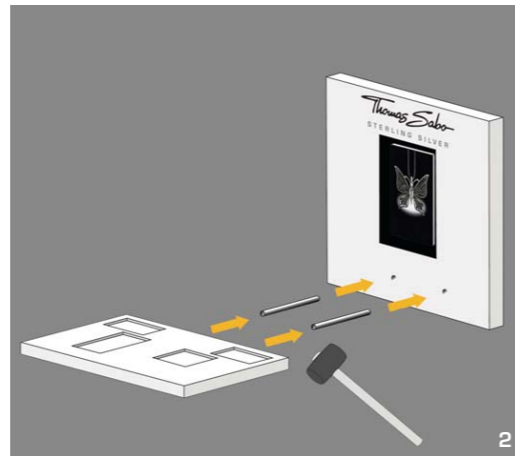


ASSEMBLY INSTRUCTION DISPLAYS

*Thomas Sabo*

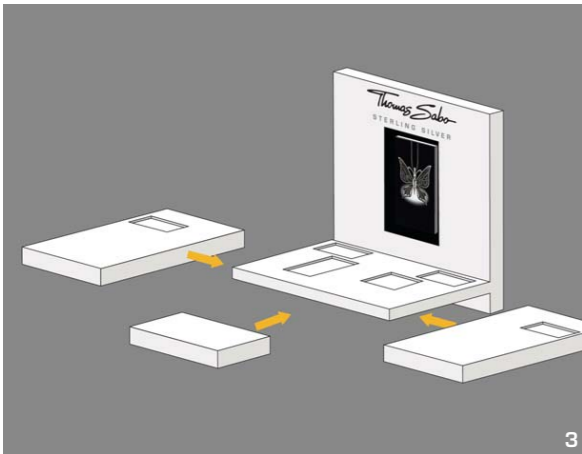


1

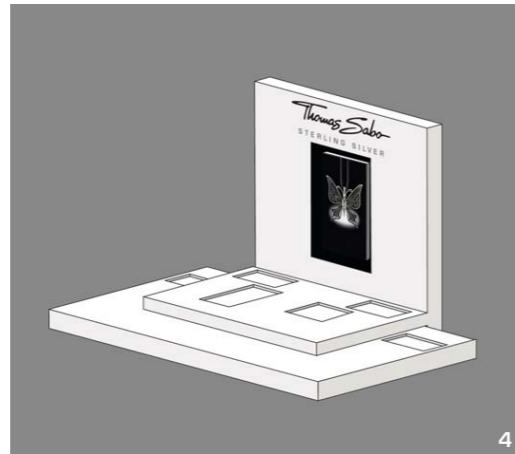


2

**Step 1**  
Stick the photo on the surface of the frame. Pay attention, that the pre-drilled holes on the backside of the frame are situated in the upper third. Fit the frame to the metal pins and press it to the back board.



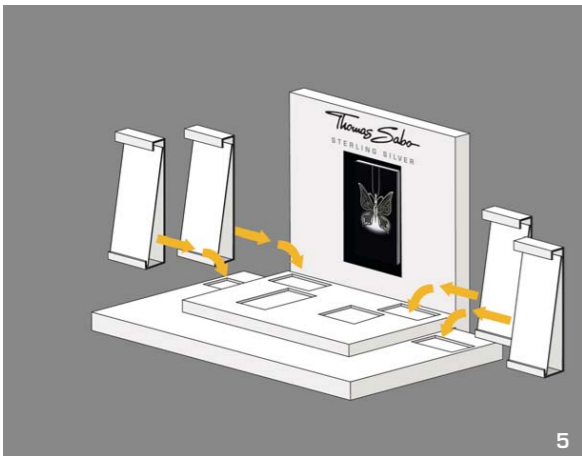
3



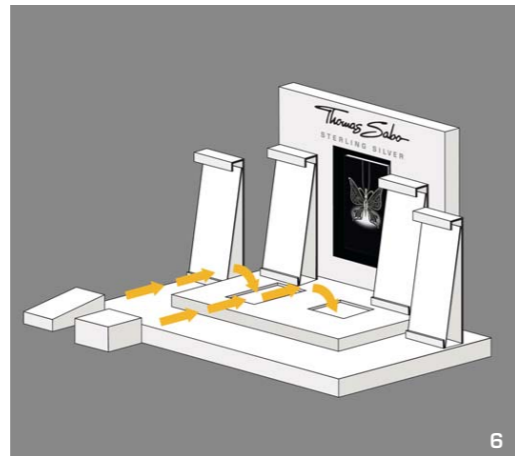
4

**Step 2**  
Insert the metal pins in the holes in the basic board. Use a rubber mallet if necessary. Put down the back board and press the basic board with the metal pins into the pre-drilled holes in the back board.

**Step 3**  
Bring the display in an upright position and lay down the 3 additional basic boards underneath. (possible variation: see image 8)



5

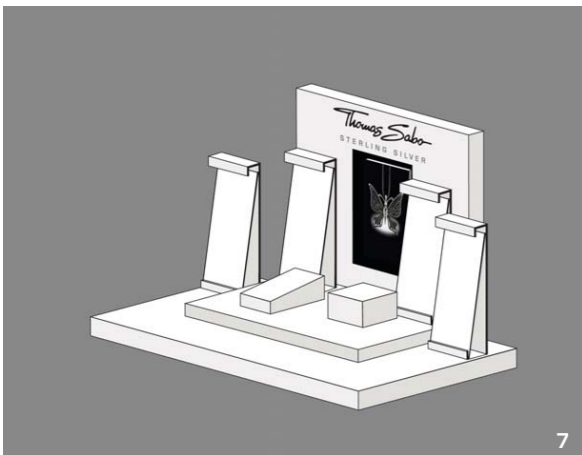


6

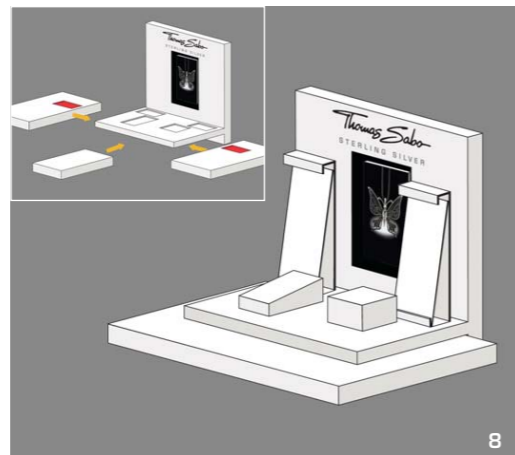
**Step 4**  
Arrange the display symmetrically over the basic boards.

**Step 5**  
Place the necklace stand in the designated pockets.

**Step 6**  
Place the small diagonal display and the presentation cube in the designated pockets.



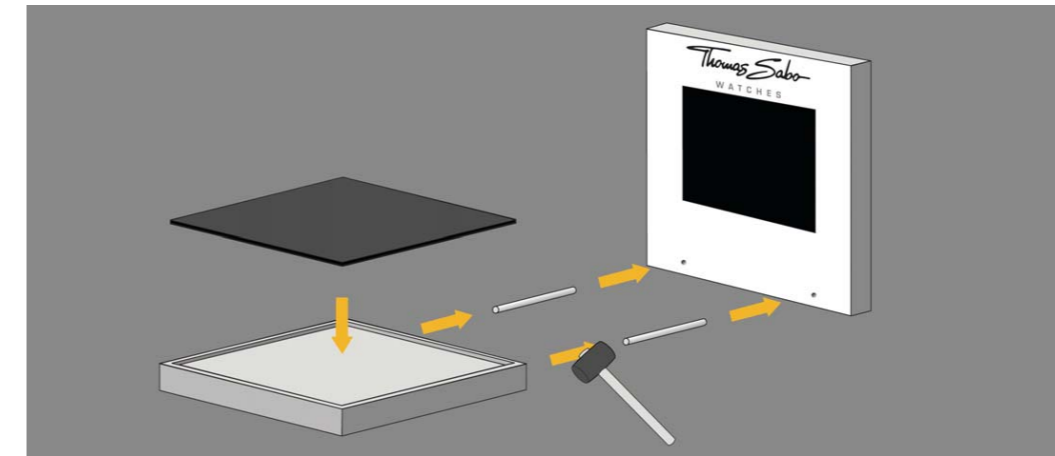
7



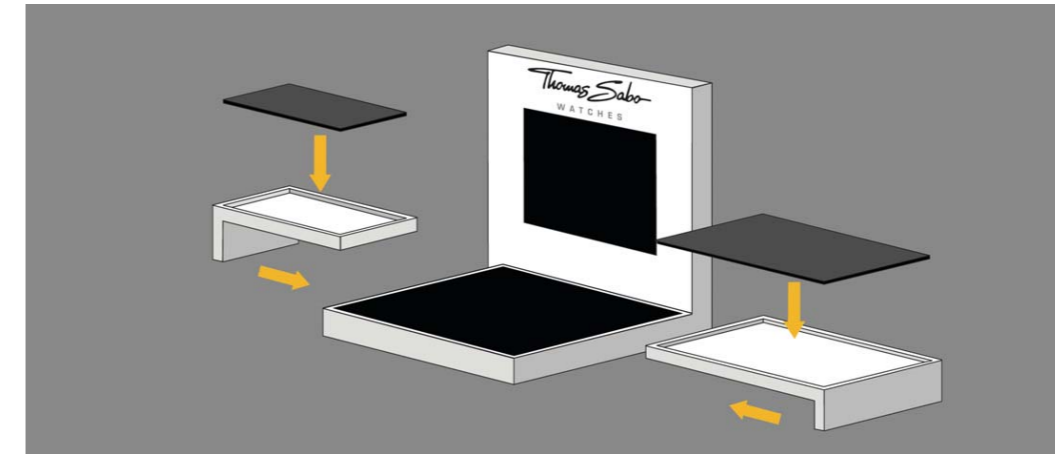
8

**Image 7**  
DK106, DK107 Display for jewelry – large version of installation.

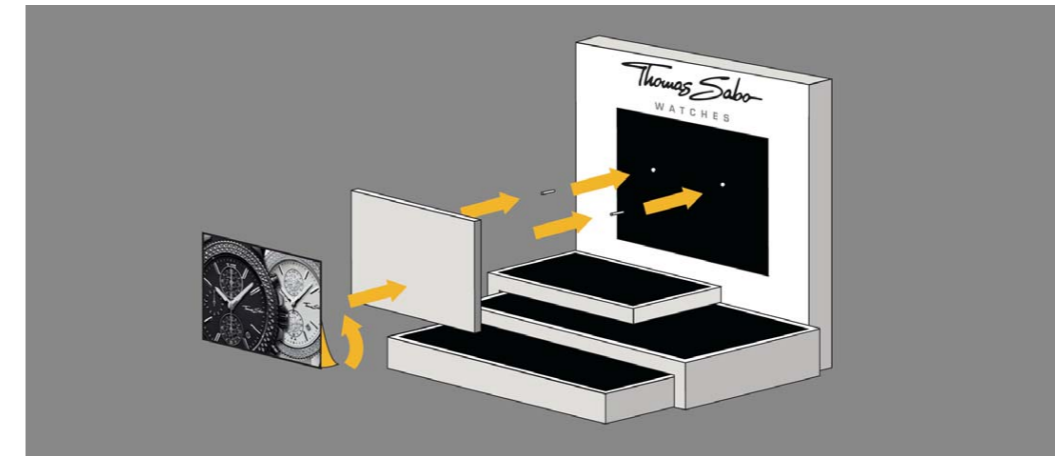
**Image 8**  
DK106, DK107 Display for jewelry – small version of installation; DK 108 Small display without diagonal display/presentation cube.



**Step 1**  
Insert the metal pins in the holes in the basic board. Use a rubber mallet if necessary. Put down the back board and press the basic board with the metal pins into the pre-drilled holes in the back board. Bring the display in an upright position and insert the black panel.



**Step 2**  
Insert the black panels in the lateral platforms and apply them one after the other to the basic board.



**Step 3**  
Stick the photo on the frame. Pay attention, that the pre-drilled holes at the backside of the frame are situated in the upper third. Fit the frame to the metal pins and press it to the back board.



**DK 109, DK 110**  
Watch display large and medium with 2 flexible lateral platforms.



**DK 111**  
Watch display small with one flexible lateral platform.